

ZERO SET®

SIX JAW SCROLL CHUCKS WITH TOP REVERSIBLE JAWS

BTC® ZERO SET®

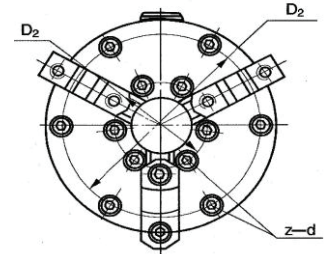
.0005" repeatability on duplicate parts. This accuracy is possible by having a clearance of .020" between the chuck cavity and the mounting plate hub. Opposing adjusting screws allow alignment to adjust work to "dead true" accuracy and repeatability on duplicate parts. With proper care BTC® useful life is approximately 2.5 times longer than standard self centering scroll chucks.

SUPPLIED WITH:

Chuck - Hardend Scroll,
Master Jaws and Top Jaws
T-Wrench
Mounting Screws

OPTIONS:

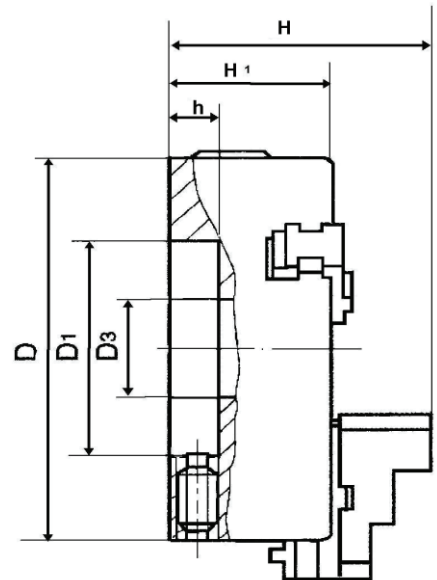
Backplates (page 8)



WORKHOLDING CAPACITIES AND MAXIMUM RPM LIMITS

SIZE	MODEL	OD MIN	OD MAX	ID MIN	ID MAX	MAX RPM
6"	1066R	0.200	6.000	1.875	5.750	2500
6" ³	1066RAS	0.200	6.000	1.875	5.750	2500
8"	1086R	0.425	8.250	2.125	6.750	2200
10"	1106R	0.625	9.360	2.937	8.718	1900
12"	1126R	0.775	11.312	3.281	10.125	1500
15"	1156R	0.875	15.000	4.000	15.748	1300

³ Am. Std. Master jaws and top jaws



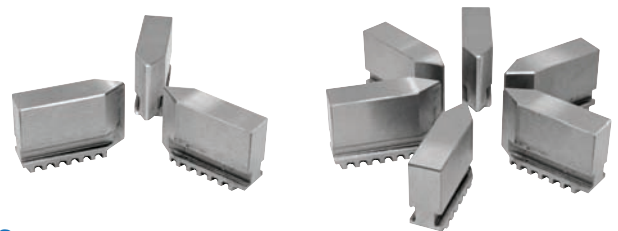
Solid Soft Jaws Now Available for Zero Set® 3 and 6 Jaw Chucks

3 Jaw

SIZE	MODEL
6"	630-9
8"	830-9
10"	103-9
12"	123-9
15"	153-9

6 Jaw 60° Point

SIZE	MODEL
6"	660-9
8"	860-9
10"	106-9
12"	126-9
15"	156-9



PRINCIPAL SPECIFICATIONS

SIZE	MODEL	WEIGHT	D	D1	D2	D3	H	H1	h	z-d
6" ₂	1066R	19	6.000	3.125	5.343	1.535	3.882	2.323	0.689	1/4-20
8" ₂	1086R	50	8.270	4.750	7.500	2.264	5.206	3.122	0.752	3/8-16
10" ₁	1106R	70	10.000	6.374	4.375	2.835	6.056	3.492	0.803	7/16-14
12" ₁	1126R	116	12.000	7.905	5.250	3.268	6.569	3.980	0.803	1/2-13
15" ₁	1156R	200	15.000	11.781	6.750	4.252	8.799	5.362	1.063	5/8-11

₁ Inner Mtg. Holes D2

₂ Outer Mtg. Holes D2