

ZERO SET® - STEEL

FORGED STEEL BODY

SIX JAW SCROLL CHUCKS WITH TOP REVERSIBLE JAWS

BTC® ZERO SET®

.0004" repeatability on duplicate parts. This accuracy is possible by having a clearance of .020" between the chuck cavity and the mounting plate hub. Opposing adjusting screws allow alignment to adjust work to "dead true" accuracy and repeatability on duplicate parts.

ZERO SET® STEEL FEATURES:

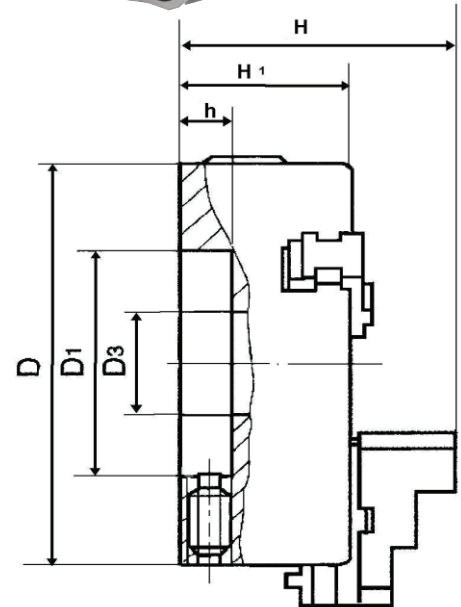
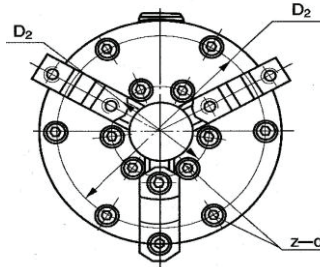
- Forged steel for higher speeds.
- Scroll hardened ground and balanced.
- Jaws ground and hardened.
- Fits all standard BTC mounting plates.
- All BTC chuck jaws are:
American Standard tongue and groove.

SUPPLIED WITH:

Chuck
Master Jaws and Top Jaws
T-Wrench
Mounting Screws

OPTIONS:

Backplates (page 8)



WORKHOLDING CAPACITIES AND MAXIMUM RPM LIMITS

SIZE	MODEL	OD MIN	OD MAX	ID MIN	ID MAX	MAX RPM
6"	SB1066R	0.200	6.000	1.875	5.750	2700
6" ³	SB1066RAS	0.200	6.000	1.875	5.750	2700
8"	SB1086R	0.425	8.250	2.125	6.750	2300
10"	SB1106R	0.625	9.360	2.937	8.718	2000
12"	SB1126R	0.775	11.312	3.281	10.125	1600
15"	SB1156R	0.875	15.000	4.000	15.748	1500

³ Am. Std. Master jaws and top jaws

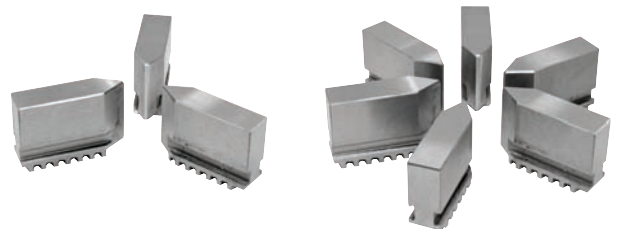
Solid Soft Jaws Now Available for Zero Set® 3 and 6 Jaw Chucks

3 Jaw

SIZE	MODEL
6"	630-9
8"	830-9
10"	103-9
12"	123-9
15"	153-9

6 Jaw 60° Point

SIZE	MODEL
6"	660-9
8"	860-9
10"	106-9
12"	126-9
15"	156-9



PRINCIPAL SPECIFICATIONS

SIZE	MODEL	WEIGHT	D	D1	D2	D3	H	H1	h	z-d
6" ₂	SB1066R	22	6.000	3.125	5.343	1.535	3.882	2.323	0.689	1/4-20
8" ₂	SB1086R	52	8.270	4.750	7.500	2.264	5.206	3.122	0.752	3/8-16
10" ₁	SB1106R	73	10.000	6.374	4.375	2.835	6.056	3.492	0.803	7/16-14
12" ₁	SB1126R	120	12.000	7.905	5.250	3.268	6.569	3.980	0.803	1/2-13
15" ₁	SB1106R	200	15.000	11.781	6.75	4.252	8.799	5.362	1.063	5/8-11

₁ Inner Mtg. Holes D2

₂ Outer Mtg. Holes D2