

ZERO SET® MOUNTING PLATES

BTC® mountings are designed for the easiest possible installation.
 They also minimize overhang by using our Zero Set® recessed design.
 All Zero Set® mountings are interchangeable on the same size chuck.
 Fits all forged steel and semi steel ZERO SET chucks

AMERICAN STANDARD FLANGE NOSE - TYPE A

Spindle Nose	"A" Dia.	Chuck Size							
		4"	5"	6"	8 1/4"	10"	12"	15"	21"
A-3	2.130	AS-318	AS-300						
A-4	2.500	AS-319	AS-304	AS-301	AS-306				
A-5	3.250		AS-305	AS-302	AS-307	AS-311	AS-314		
A-6	4.190			AS-303	AS-308	AS-312	AS-315	AS-343	
A-8	5.500				AS-309	AS-313	AS-316	AS-344	AS-351
A-11	7.750						AS-317	AS-349	AS-350
A-15	11.250							AS342	AS-352



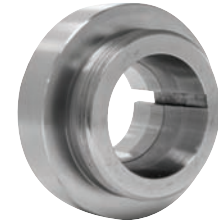
CAMLOCK - TYPE D

Spindle Nose	"A" Dia.	Chuck Size							
		4"	5"	6"	8 1/4"	10"	12"	15"	21"
D-3	2.130	CD-216	CD-205	CD-203	CD-220				
D-4	2.500	CD-217	CD-221	CD-201	CD-204	CD-219			
D-5	3.250			CD-202	CD-208	CD-210	CD-213		
D-6	4.190			CD-206	CD-209	CD-211	CD-214	CD-238	
D-8	5.500				CD-207	CD-212	CD-215	CD-267	CD-271
D-11	7.750						CD-273	CD-266	CD-272
D-15	11.251								CD-273



LONG TAPER KEY DRIVE - TYPE L

Spindle Nose	"A" Dia.	Chuck Size					
		5"	6"	8 1/4"	10"	12"	15"
L-00	2.750	LT-103	LT-100	LT-108	LT-111		
L-0	3.250	LT-104	LT-101	LT-109	LT-112	LT-115	
L-1	4.130			LT-110	LT-113	LT-116	
L-2	5.250					LT-117	LT-177
L-3	6.500						LT-178



HARDINGE® STYLE MOUNTING PLATES

Spindle Nose	Mounting Number	Chuck Size	Chuck Number
4° Taper	HS-120	5"-3 JAW	1053R
4° Taper	HS-357	6"-3 JAW	1063R
4° Taper	HS-357	6"-6 JAW	1066R
4° Taper	HS-362	6"-4 JAW	4064

Spindle Nose	Mounting Number	Chuck Size	Chuck Number
2 3/16-10	HK-790	5"-3 JAW	1053R
2 3/16-10	HK-276	6"-3 JAW	1063R
2 3/16-10	HK-276	6"-6 JAW	1066R
2 3/16-10	HK-673	6"-4 JAW	4064



THREADED MOUNTING PLATES

Spindle Nose	"A" Dia.	Chuck size				
		5"	6"	8 1/4"	10"	12"
1 1/2-8	1.500	TH-903	TH-950			
1 3/4-8	1.750	TH-904	TH-951			
2 1/4-8	2.250		TH-955	TH-985	TH-995	
2 3/8-6	2.375		TH-958	TH-986	TH-989	TH-997
2 3/4-8	2.750					TH-999



ROTARY TABLE PLATES

Rotary Table	Mounting Number	Chuck Size	Chuck Number
HRT-160	AS-160-H	6" 3-Jaw	1063R
	J4-160-H	6" 4-Jaw	4064
HRT-210	AS-210-H	8" 3-Jaw	1083R
	J4-210-H	8" 4-Jaw	4084
HRT-310	AS-310-H	12" 3-Jaw	1123R
	J4-310-H	12" 4-Jaw	4124



Rotary table plates available for other models