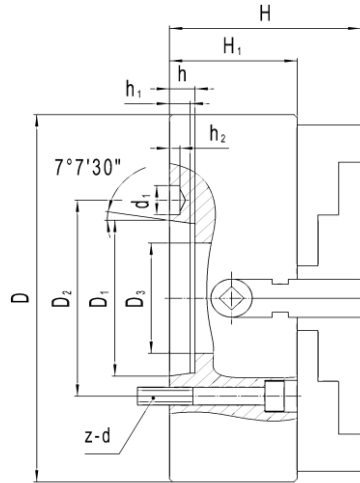


FOUR JAW INDEPENDENT CHUCKS DIRECT MOUNT TYPE "A" SOLID JAWS OR TOP REVERSIBLE JAWS

These chucks have jaws that are operated individually to allow solid gripping of oddly shaped work pieces. Semi-steel body.

SUPPLIED WITH:

- One piece solid reversible jaws
- or top reversible jaws
- T - Wrench
- Mounting Screws
- T - Slots in 12" and larger



PRINCIPAL SPECIFICATIONS

Size	MODEL	SPINDLE	WEIGHT	D	D1	D2	D3	H	H1	h	h1	h2	d1	Z-d
8"	4084A4	A2-4	35	7.874	2.500	3.252	2.205	4.212	2.953	0.512	0.394	0.256	0.579	4-M10
8"	4084A4R	A2-4	35	7.874	2.500	3.252	2.205	4.212	2.953	0.512	0.394	0.256	0.579	4-M10
8"	4084A5	A2-5	35	7.874	3.251	4.126	2.205	4.212	2.953	0.591	0.472	0.256	0.642	4-M10
8"	4084A5R	A2-5	35	7.874	3.251	4.126	2.205	4.212	2.953	0.591	0.472	0.256	0.642	4-M10
10"	4104A5	A2-5	51	9.843	3.251	4.126	2.953	4.724	3.150	0.591	0.472	0.256	0.642	4-M10
10"	4104A5R	A2-5	51	9.843	3.251	4.126	2.953	4.724	3.150	0.591	0.472	0.256	0.642	4-M10
10"	4104A6	A2-6	51	9.843	4.188	5.252	2.953	4.724	3.150	0.630	0.512	0.256	0.768	4-M12
10"	4104A6R	A2-6	51	9.843	4.188	5.252	2.953	4.724	3.150	0.630	0.512	0.256	0.768	4-M12
12"	4124A6	A2-6	100	12.598	4.188	5.252	3.740	5.276	3.543	0.630	0.512	0.256	0.768	4-M12
12"	4124A6R	A2-6	100	12.598	4.188	5.252	3.740	5.276	3.543	0.630	0.512	0.256	0.768	4-M12
12"	4124A8	A2-8	100	12.598	5.500	6.748	3.740	5.276	3.543	0.709	0.551	0.315	0.953	4-M16
12"	4124A8R	A2-8	100	12.598	5.500	6.748	3.740	5.276	3.543	0.709	0.551	0.315	0.953	4-M16
16"	4164A5	A2-5	139	15.748	3.251	4.126	3.110	5.630	3.740	0.059	0.472	0.256	0.642	4-M10
16"	4164A5R	A2-5	139	15.748	3.251	4.126	3.110	5.630	3.740	0.059	0.472	0.256	0.642	4-M10
16"	4164A6	A2-6	139	15.748	4.188	5.252	3.740	5.630	3.740	0.630	0.512	0.256	0.768	4-M12
16"	4164A6R	A2-6	139	15.748	4.188	5.252	3.740	5.630	3.740	0.630	0.512	0.256	0.768	4-M12
16"	4164A8	A2-8	139	15.748	5.500	6.748	4.921	5.630	3.740	0.709	0.551	0.315	0.953	4-M16
16"	4164A8R	A2-8	139	15.748	5.500	6.748	4.921	5.630	3.740	0.709	0.551	0.315	0.953	4-M16
20"	4204A8	A2-8	265	19.685	5.500	6.748	5.354	6.339	4.173	0.709	0.551	0.315	0.953	4-M16
20"	4204A8R	A2-8	265	19.685	5.500	6.748	5.354	6.339	4.173	0.709	0.551	0.315	0.953	4-M16
20"	4204A11	A2-11	245	19.685	7.751	9.252	6.299	6.338	4.173	0.787	0.630	0.394	1.157	4-M20
20"	4204A11R	A2-11	245	19.685	7.751	9.252	6.299	7.598	4.173	0.787	0.630	0.394	1.157	4-M20
25"	4254A11	A2-11	353	24.803	7.751	9.252	7.500	7.087	4.645	0.787	0.630	0.394	1.157	4-M20
25"	4254A11R	A2-11	353	24.803	7.751	9.252	7.500	8.011	4.645	0.787	0.630	0.394	1.157	4-M20
25"	4254A15	A2-15	340	24.803	11.251	13.000	7.1/10.5	7.087	4.645	0.827	0.669	0.394	1.406	8-M24
25"	4254A15R	A2-15	340	24.803	11.251	13.000	7.1/10.5	8.011	4.645	0.827	0.699	0.394	1.406	8-M24
25"	4254A20	A2-20	325	24.803	16.251	18.252	7.1/12.5	7.087	4.645	0.906	0.748	0.394	1.657	8-M24
25"	4254A20R	A2-20	325	24.803	16.251	18.252	7.1/12.5	8.011	4.645	0.906	0.748	0.394	1.657	8-M24
32"	4324A11R	A2-11	587	31.500	7.751	9.252	7.500	9.100	5.197	0.787	0.630	0.394	1.157	8-M20
32"	4324A15R	A2-15	567	31.500	11.251	13.000	9.0/11.0	9.100	5.197	0.827	0.669	0.394	1.406	8-M24
32"	4324A20R	A2-20	550	31.500	16.251	18.252	14.600	9.100	5.197	0.906	0.748	0.394	1.657	8-M24
40"	4404A11R	A2-11	950	39.370	7.751	9.252	7.500	10.236	5.906	0.787	0.630	0.394	1.157	8-M20
40"	4404A15R	A2-15	920	39.370	11.251	13.000	11.000	10.236	5.906	0.827	0.669	0.394	1.406	8-M24
40"	4404A20R	A2-20	890	39.370	16.251	18.252	14.600	10.236	5.906	0.906	0.748	0.394	1.657	8-M24

"R" DESIGNATES TOP REVERSIBLE JAWS

Other A mount chucks available in flatback style with mounting plate.