

FRONT MOUNT THREE JAW SCROLL CHUCKS TOP REVERSIBLE JAWS

For use with rotary tables and applications where back mounting chucks cannot be used.
For use on 3 or 6 slot rotary tables, or on base plate for 4 and 8 slot rotary tables.

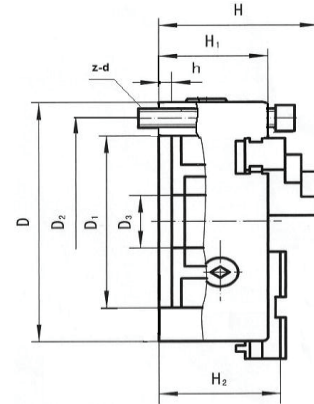
Semi steel body

Supplied with:

Master jaw and top jaws

T-Wrench

Mounting screws



PRINCIPAL SPECIFICATIONS

SIZE	MODEL	WGT	D	D1	D2	D3	H	H1	H2	h	Z-d
5"	F3053R	14	5.118	3.937	4.528	1.181	3.828	2.362	2.445	0.138	3-M8
6"	F3063R	21	6.299	5.118	5.591	1.575	4.291	2.559	2.795	0.197	3-M8
8"	F3083R	39	7.874	6.496	7.087	2.559	4.803	2.953	3.150	0.197	3-M10
10"	F3103R	56	9.843	8.110	8.898	3.150	5.354	3.150	3.385	0.197	3-M12
12"	F3123R	99	12.795	10.709	11.654	3.937	6.673	3.780	4.154	0.472	3-M16
15"	F3153R	122	14.961	12.795	13.780	5.315	6.752	3.858	4.232	0.236	3-M16
16"	F3163R	140	15.748	13.386	14.488	5.433	6.772	3.858	4.252	0.236	3-M16
20"	F3203R	320	19.685	17.323	18.307	8.268	7.953	4.528	4.961	0.236	6-M16
25"	F3253R	510	24.803	22.047	23.425	10.630	8.582	5.256	5.590	0.276	6-M16
32"	F3323R	556	31.496	27.953	29.921	15.157	9.843	6.339	6.693	0.335	6-M20
40"	F3403R	930	39.370	35.630	37.402	18.110	10.906	7.087	7.483	0.354	6-M24

FRONT MOUNT OR REAR MOUNT THREE JAW SCROLL CHUCKS DOUBLE KEYWAY - TOP REVERSIBLE JAWS

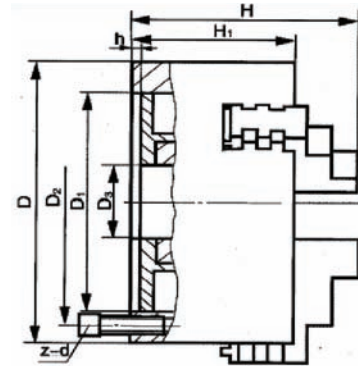
For use in heavy duty applications when extra strength is required.

Supplied with:

Master jaw and top jaws

T-Wrench

Mounting screws



Rear mount pictured

PRINCIPAL SPECIFICATIONS

SIZE	MODEL	WGT	D	D1	D2	D3	H	H1	h	Z-d
6"	DK-3063R	20	6.299	4.921	5.512	1.654	4.173	2.992	0.197	6-M10
8"	DK-3083R	33	7.874	6.496	7.087	2.559	5.236	3.386	0.197	6-M10
10"	DK-3103R	54	9.843	8.110	8.898	3.150	5.276	3.701	0.197	6-M12
12.5"	DK-3123R	96	12.402	10.236	11.220	3.937	6.712	4.173	0.236	6-M16

Must specify front mount or rear mount.