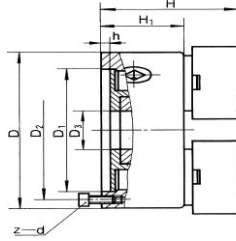


## TWO JAW SELF CENTERING SCROLL CHUCKS FLATBACK - TOP REVERSIBLE JAWS

American standard two-piece tongue and groove jaws.  
Scroll and jaws hardened and ground. Top reversible jaws.  
Semi-steel body.

**SUPPLIED WITH:**  
Master jaws and top jaws  
T-Wrench  
Mounting screws



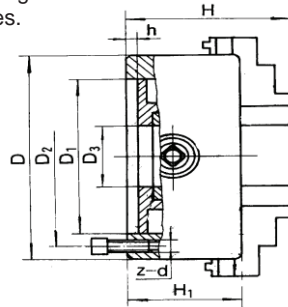
### PRINCIPAL SPECIFICATIONS

| Size | MODEL | WEIGHT | D      | D1     | D2     | D3    | H     | H1    | h     | Z-d   |
|------|-------|--------|--------|--------|--------|-------|-------|-------|-------|-------|
| 6"   | 2062R | 22     | 6.299  | 5.118  | 5.591  | 1.575 | 4.291 | 2.559 | 0.197 | 3-M8  |
| 8"   | 2082R | 35     | 7.874  | 6.496  | 7.087  | 2.559 | 4.803 | 2.953 | 0.197 | 3-M10 |
| 10"  | 2102R | 51     | 9.843  | 8.110  | 8.898  | 3.150 | 5.276 | 3.150 | 0.197 | 3-M12 |
| 12"  | 2122R | 99     | 12.795 | 10.709 | 11.654 | 3.937 | 6.102 | 3.780 | 0.472 | 3-M16 |
| 15"  | 2152R | 155    | 14.961 | 12.795 | 13.780 | 5.315 | 6.181 | 3.858 | 0.236 | 3-M16 |
| 20"  | 2202R | 262    | 19.685 | 17.323 | 18.307 | 8.268 | 8.268 | 4.528 | 0.236 | 6-M16 |

## SIX JAW SELF CENTERING SCROLL CHUCKS FLATBACK - SOLID JAWS

These chucks are suitable for clamping and machining thin walled workpieces.

**SUPPLIED WITH:**  
One set of internal solid jaws  
T-Wrench  
Mounting screws



### PRINCIPAL SPECIFICATIONS

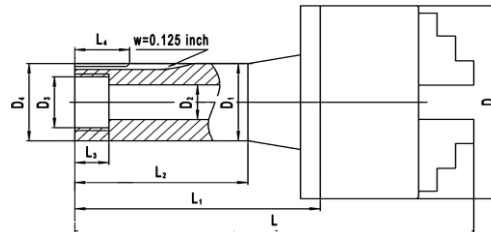
| Size | MODEL | WEIGHT | D     | D1    | D2    | D3    | H     | H1    | h     | Z-d   |
|------|-------|--------|-------|-------|-------|-------|-------|-------|-------|-------|
| 4"   | 8046  | 8      | 3.937 | 2.835 | 3.307 | 1.024 | 2.874 | 2.106 | 0.138 | 3-M8  |
| 5"   | 8056  | 14     | 5.118 | 3.937 | 4.528 | 1.378 | 3.386 | 2.362 | 0.138 | 3-M8  |
| 6"   | 8066  | 21     | 6.496 | 5.118 | 5.709 | 1.654 | 3.799 | 2.618 | 0.177 | 3-M8  |
| 8"   | 8086  | 36     | 7.874 | 6.496 | 7.087 | 2.559 | 4.291 | 2.953 | 0.197 | 3-M10 |

0.003" TIR repeatability and meet ASA specifications on duplicate parts for chucks through 12"

## 5C PRECISION CHUCKS THREE JAW AND FOUR JAW

5C Precision chucks eliminate the problem of having to tear down a collet set-up.  
You can easily switch to a 3 or 4 jaw chuck when collets aren't applicable.  
Works with any 5C tooling.

**SUPPLIED WITH:**  
2 set of hard jaws (3-Jaw chucks)  
1 piece reversible jaws (4-Jaw chucks)  
T Wrench



### PRINCIPAL SPECIFICATIONS THREE JAW CHUCKS

| SIZE | MODEL | WEIGHT | D     | D1    | D2     | D3       | D4       | L     | L1    | L2    | L3    | L4    |
|------|-------|--------|-------|-------|--------|----------|----------|-------|-------|-------|-------|-------|
| 3"   | 5C033 | 7      | 3.150 | 1.250 | 0.7650 | 1.042-24 | 1.238-20 | 6.618 | 4.020 | 2.725 | 0.480 | 0.650 |
| 4"   | 5C043 | 11     | 3.937 | 1.250 | 0.7650 | 1.042-24 | 1.238-20 | 6.953 | 4.020 | 2.725 | 0.480 | 0.650 |

### FOUR JAW CHUCKS

| SIZE | MODEL | WEIGHT | D     | D1    | D2     | D3       | D4       | L     | L1    | L2    | L3    | L4    |
|------|-------|--------|-------|-------|--------|----------|----------|-------|-------|-------|-------|-------|
| 3"   | 5C034 | 6      | 3.150 | 1.250 | 0.7650 | 1.042-24 | 1.238-20 | 6.220 | 4.020 | 2.725 | 0.480 | 0.650 |
| 4"   | 5C044 | 12     | 3.937 | 1.250 | 0.7650 | 1.042-24 | 1.238-20 | 6.929 | 4.020 | 2.725 | 0.480 | 0.650 |