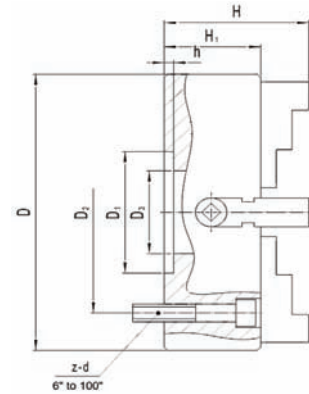


FOUR JAW INDEPENDENT CHUCKS - FLATBACK TOP REVERSIBLE JAWS FORGED STEEL

These chucks have jaws that are operated individually to allow solid gripping of oddly shaped work pieces.

SUPPLIED WITH:

- Top reversible jaws
- T - Wrench
- Mounting cam studs
- T - Slots in 12" and larger**



Steel body chuck applications:
Higer RPM
Longer life
Tough enviornments

PRINCIPAL SPECIFICATIONS

	Forged Steel									
Size	MODEL	WEIGHT	D	D1	D2	D3	H	H1	h	Z-d
6"	S4064R	22	6.299	2.559	3.740	1.772	3.661	2.559	0.197	4-M10
8"	S4084R	35	7.874	3.150	4.409	2.205	4.123	2.953	0.236	4-M10
10"	S4104R	51	9.843	4.331	5.118	2.953	4.724	3.150	0.236	4-M12
12"	S4124R	100	12.598	5.512	6.496	3.740	5.276	3.543	0.236	4-M16
16"	S4164R	139	15.748	6.229	7.283	4.921	5.631	3.740	0.315	4-M16
18"	S4184R	220	17.717	7.087	8.071	5.512	5.787	3.937	0.315	4-M16
20"	S4204R	265	19.685	7.874	9.291	6.300	7.598	4.173	0.315	4-M20
25"	S4254R	384	24.803	8.661	10.157	7.087	8.011	4.646	0.394	4-M20
32"	S4324R	570	31.496	9.843	11.811	8.268	7.953	5.197	0.472	8-M20
40"	S4404R	930	39.370	12.598	14.567	10.236	9.055	5.906	0.591	8-M20

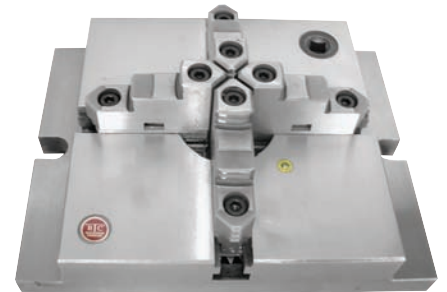
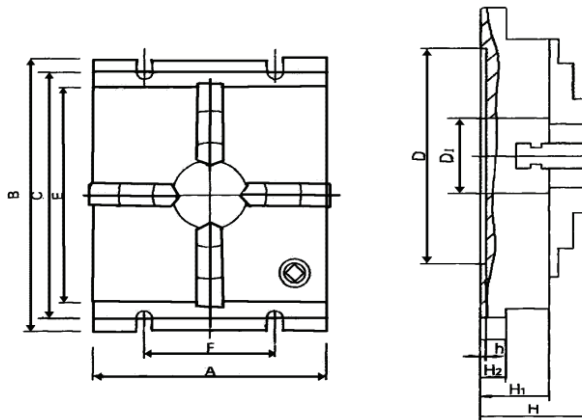
"R" DESIGNATES TOP REVERSIBLE JAWS

FOUR JAW SQUARE CHUCKS

Milling applications where low profile chucks are required.

SUPPLIED WITH:

- Chuck
- Top reversible jaws
- T-Wrench



PRINCIPAL SPECIFICATIONS

SIZE	MODEL	A	B	C	D	D1	E	F	H	H1	H2	h
8"	FJS-8	7.874	10.472	9.291	7.087	2.559	7.874	5.512	3.504	2.165	0.906	0.196
10"	FJS-10	9.84	12.440	11.26	9.05	3.150	9.843	5.512	3.78	2.441	0.906	0.196