

THREE JAW SELF CENTERING SCROLL CHUCKS TYPE "A" MOUNT - TOP REVERSIBLE JAWS

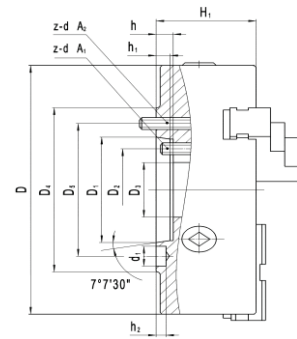
FORGED STEEL

American standard two-piece tongue & groove Jaws.
Scroll and jaws hardened and ground.

SUPPLIED WITH:

Master jaws and top jaws or solid jaws
T-Wrench
Mounting screws

Steel body chuck applications:
Higher RPM
Longer life
Tough environments



PRINCIPAL SPECIFICATIONS

STYLE A1 (USE INNER TAPPED HOLES)

| FORGED STEEL | | | | | | | | | | | | | | | |
|--------------|---------------------------|---------|--------|--------|--------|--------|--------|--------|-------|-------|-------|-------|-------|-------|--|
| Size | MODEL | SPINDLE | WEIGHT | D | D1 | D2 | D3 | D4 | H1 | h | h1 | h2 | d1 | Z-d | |
| 8" | S6083A5R | A1-5 | 47 | 7.874 | 3.250 | 2.437 | 1.575 | 5.236 | 3.307 | 0.563 | 0.472 | 0.256 | 0.642 | 3-M10 | |
| 10" | S6103A6R | A1-6 | 74 | 9.843 | 4.188 | 3.252 | 2.165 | 6.496 | 3.661 | 0.625 | 0.512 | 0.256 | 0.768 | 6-M12 | |
| 12" | S6123A6R | A1-6 | 142 | 12.795 | 4.188 | 3.252 | 2.165 | 6.496 | 4.173 | 0.625 | 0.512 | 0.256 | 0.768 | 6-M12 | |
| 12" | S6123A8R | A1-8 | 142 | 12.795 | 5.500 | 4.374 | 3.071 | 8.268 | 4.173 | 0.687 | 0.551 | 0.315 | 0.953 | 6-M16 | |
| 20" | S6203A15R | A1-15 | 320 | 19.685 | 11.251 | 9.748 | 7.874 | 14.961 | 5.315 | 0.813 | 0.669 | 0.394 | 1.406 | 6-M24 | |
| 25" | S6253A20R | A1-20 | 320 | 24.803 | 16.251 | 14.500 | 12.500 | 20.500 | 5.591 | 0.829 | 0.748 | 0.394 | 1.657 | 6-M24 | |

Although an A1 type spindle nose has both inner and outer tapped holes,
These chucks utilize the inner holes, and will **NOT** fit on an A2 type spindle.

PRINCIPAL SPECIFICATIONS

STYLE A2 (USE OUTER TAPPED HOLES)

| FORGED STEEL | | | | | | | | | | | | | | | |
|------------------|----------------------------|---------|--------|--------|--------|--------|--------|--------|-------|-------|-------|-------|-------|-------|--|
| Size | MODEL | SPINDLE | WEIGHT | D | D1 | D3 | D4 | D5 | H1 | h | h1 | h2 | d1 | Z-d | |
| 8" ₁ | S6083A25 | A2-5 | 47 | 7.874 | 3.250 | 2.559 | 5.236 | 4.126 | 3.733 | 0.563 | 0.472 | 0.256 | 0.642 | 6-M10 | |
| 8" ₁ | S6083A26 | A2-6 | 47 | 7.874 | 4.188 | 2.559 | 6.496 | 5.252 | 4.180 | 0.625 | 0.512 | 0.256 | 0.768 | 6-M12 | |
| 15" ₁ | S6153A28R | A2-8 | 142 | 14.96 | 5.500 | 5.315 | 8.268 | 6.748 | 4.875 | 0.687 | 0.630 | 0.315 | 0.953 | 6-M16 | |
| 15" ₁ | S6153A211R | A2-11 | 142 | 14.96 | 7.751 | 5.315 | 11.024 | 9.252 | 4.875 | 0.750 | 0.630 | 0.394 | 1.157 | 6-M20 | |
| 20" | S6203A28R | A2-8 | 320 | 19.685 | 5.500 | 5.354 | 8.268 | 6.748 | 5.315 | 0.787 | 0.630 | 0.394 | 0.953 | 6-M16 | |
| 20" | S6203A211R | A2-11 | 320 | 19.685 | 7.751 | 7.480 | 11.024 | 9.252 | 5.315 | 0.787 | 0.630 | 0.394 | 1.157 | 6-M20 | |
| 25" | 6253A211R | A2-11 | 530 | 24.803 | 7.751 | 7.500 | 11.024 | 9.252 | 5.591 | 0.087 | 0.630 | 0.394 | 1.157 | 6-M20 | |
| 25" | 6253A215R | A2-15 | 530 | 24.803 | 11.251 | 10.236 | 14.961 | 13.000 | 5.591 | 0.827 | 0.669 | 0.394 | 1.406 | 6-M24 | |

₁ Requires mounting plate (included)

These chucks use the outer tapped holes, and will fit on either A1 or A2 type spindles.

FRONT MOUNT THREE JAW SCROLL CHUCKS TOP REVERSIBLE JAWS

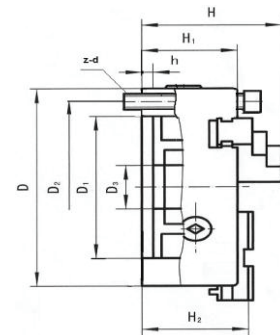
FORGED STEEL

For use with rotary tables and applications where back mounting chucks cannot be used.
For use on 3 or 6 slot rotary tables, or on base plate for 4 and 8 slot rotary tables.

Supplied with:

Master jaw and top jaws
T-Wrench
Mounting screws

Steel body chuck applications:
Higher RPM
Longer life
Tough environments



PRINCIPAL SPECIFICATIONS

| FORGED STEEL | | | | | | | | | | | | |
|--------------|-------------------------|-----|--------|--------|--------|--------|-------|-------|-------|-------|-------|--|
| SIZE | MODEL | WGT | D | D1 | D2 | D3 | H | H1 | H2 | h | Z-d | |
| 6" | SF3063R | 21 | 6.299 | 5.118 | 5.591 | 1.575 | 4.291 | 2.559 | 2.795 | 0.197 | 3-M8 | |
| 8" | SF3083R | 39 | 7.874 | 6.496 | 7.087 | 2.559 | 4.803 | 2.953 | 3.150 | 0.197 | 3-M10 | |
| 10" | SF3103R | 56 | 9.843 | 8.110 | 8.898 | 3.150 | 5.354 | 3.150 | 3.385 | 0.197 | 3-M12 | |
| 12" | SF3123R | 99 | 12.795 | 10.709 | 11.654 | 3.937 | 6.673 | 3.780 | 4.154 | 0.472 | 3-M16 | |
| 15" | SF3153R | 122 | 14.961 | 12.795 | 13.780 | 5.315 | 6.752 | 3.858 | 4.232 | 0.236 | 3-M16 | |
| 20" | SF3203R | 259 | 19.685 | 17.323 | 18.307 | 8.268 | 7.953 | 4.528 | 4.961 | 0.236 | 6-M16 | |
| 25" | SF3253R | 473 | 24.803 | 22.047 | 23.425 | 10.630 | 8.582 | 5.256 | 5.590 | 0.276 | 6-M16 | |
| 32" | SF3323R | 564 | 31.496 | 27.953 | 29.921 | 15.157 | 9.843 | 6.339 | 6.693 | 0.335 | 6-M20 | |