

THREE JAW SELF CENTERING SCROLL CHUCKS - DIRECT MOUNT TYPE "D" TOP REVERSIBLE JAWS

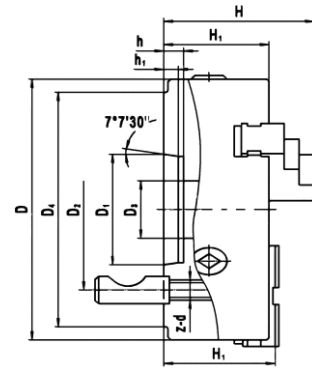
FORGED STEEL

American standard two-piece tongue and groove jaws.
Scroll and jaws hardened and ground. Top reversible jaws.

SUPPLIED WITH:

Master jaws and top jaws
T-Wrench
Mounting cam studs

Steel body chuck applications:
Higher RPM
Longer life
Tough environments



PRINCIPAL SPECIFICATIONS

SIZE	Model	SPINDLE	WEIGHT	D	D1	D2	D3	D4	H	H1	H2	h	h1	Z-d
6"	S6063D4	D1-4	32	6.299	2.500	3.252	1.575	4.606	4.488	2.756	2.756	0.512	0.394	3-M10X1
8"	S6083D4	D1-4	47	7.874	2.500	3.252	1.969	4.606	5.236	3.386	3.307	0.512	0.394	3-M10X1
8"	S6083D5	D1-5	47	7.874	3.250	4.126	1.969	5.748	5.236	3.386	3.307	0.591	0.472	6-M12X1
8"	S6083D6	D1-6	47	7.874	4.188	5.252	1.969	7.126	5.236	3.386	3.307	0.630	0.512	6-M16X1.5
10"	S6103D6	D1-6	74	9.843	4.188	5.252	2.756	7.126	5.984	3.858	4.055	0.630	0.512	6-M16X1.5
10"	S6103D8	D1-8	74	9.843	5.500	6.748	3.150	8.858	5.984	3.858	4.055	0.709	0.551	6-M20X1.5
12"	S6123D6	D1-6	142	12.795	4.188	5.252	3.937	7.126	6.654	4.173	4.173	0.630	0.512	6-M16X1.5
12"	S6123D8	D1-8	142	12.795	5.500	6.748	3.937	8.858	6.654	4.173	4.173	0.709	0.551	6-M20X1.5
12"	S6123D11	D1-11	142	12.795	7.751	9.252	3.937	11.732	6.654	4.173	4.173	0.787	0.630	6-M22X1.5
15"	S6153D8	D1-8	155	14.961	5.500	6.748	5.118	8.858	7.540	4.646	5.020	0.709	0.551	6-M20X1.5
15"	S6153D11	D1-11	155	14.961	7.751	9.252	5.315	11.732	7.540	4.646	5.020	0.787	0.630	6-M22X1.5
20"	S6203D8	D1-8	320	19.685	5.500	6.748	5.120	8.858	8.740	5.315	5.748	0.709	0.551	6-M20X1.5
20"	S6203D11	D1-11	320	19.685	7.751	9.252	7.480	11.732	8.740	5.315	5.748	0.787	0.630	6-M22X1.5
25"	S6253D8	D1-8	530	24.803	5.500	13.000	5.120	15.866	8.740	5.315	5.748	0.827	0.669	6-M24X1.5
25"	S6253D11	D1-11	530	24.803	7.751	9.252	7.480	11.732	8.740	5.315	5.748	0.787	0.630	6-M22X1.5

0.003" TIR repeatability and meet ASA specifications on duplicate parts for chucks through 12"

THREE JAW SELF CENTERING SCROLL CHUCKS - FLATBACK TOP REVERSIBLE JAWS

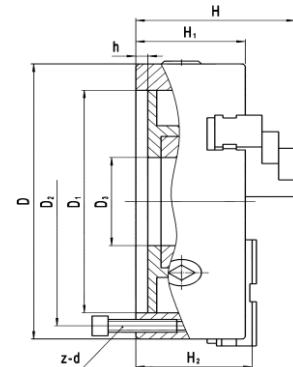
FORGED STEEL

American standard two-piece tongue and groove Jaws.
Scroll and jaws hardened and ground. Top reversible jaws.

SUPPLIED WITH:

Master jaws and top jaws
T-Wrench
Mounting screws

Steel body chuck applications:
Higher RPM
Longer life
Tough environments



PRINCIPAL SPECIFICATIONS

SIZE	Model	WEIGHT	D	D1	D2	D3	H	H1	H2	h	Z-d
5"	S3053R	14	5.118	3.937	4.528	1.181	3.828	2.362	2.445	0.138	3-M8
6"	S3063R	21	6.299	5.118	5.591	1.575	4.291	2.559	2.795	0.197	3-M8
8"	S3083R	39	7.874	2.000	7.087	2.559	4.803	2.953	3.150	0.197	3-M10
10"	S3103R	56	9.843	8.110	8.898	3.150	5.354	3.150	3.385	0.197	3-M12
12"	S3123R	99	12.795	10.709	11.654	3.937	6.673	3.780	4.154	0.472	3-M16
15"	S3153R	122	14.961	12.795	13.780	5.315	6.752	3.858	4.232	0.236	3-M16
20"	S3203R	320	19.685	17.323	18.307	8.268	7.953	4.528	4.961	0.236	6-M16
25"	S3253R	510	24.803	22.047	23.425	10.630	8.582	5.256	5.590	0.276	6-M16
32"	S3323R	556	31.496	27.953	29.921	15.157	9.843	6.339	6.693	0.335	6-M20
40"	S3403R	930	39.370	35.630	37.402	18.110	10.906	7.087	7.483	0.354	6-M24