

Self Contained Pneumatic Chuck

For applications where there is no hydraulic cylinder for thru hole clamping.

Air source required.

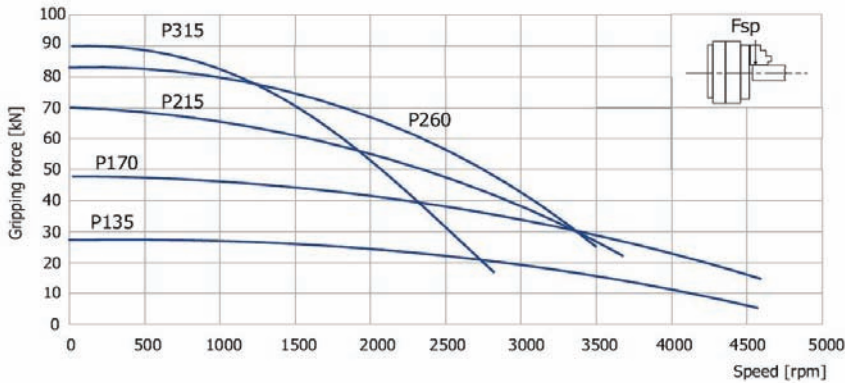
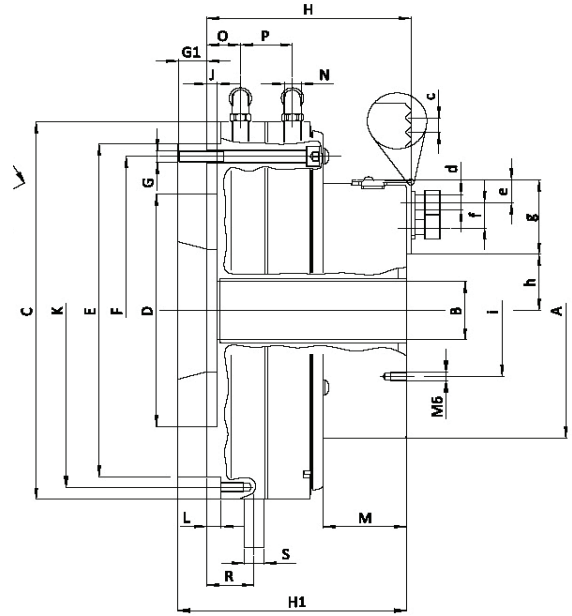
- Internal safety valves prevent loss of air pressure and gripping force.
- Serrations 1/16"x90° or 1/16"x1.5x60°
- Available in 2, 3, 4 jaw chucks

Supplied with:

- Chuck - Hardened 60 HRC Precision Ground
- 1 set soft jaws
- Pair of hoses
- Grease
- Mounting Bolts & T-Nuts

Accessories:

- Mounting plate (required)
- Soft top jaws
- Hard top jaws
- Mech. Hand valve
- Foot valve



PRINCIPAL SPECIFICATIONS (mm)

Size (")	MODEL	Weight kg.	A	B	C	D	E	F	H	H1	K	L	M
5.31 ₁	P135-32	14	136	32	204	120	174	159.5	122	138	-	9	52
6.69 ₁	P170-39	23	170	39	252	155	222	205.5	128	138	244	9	52
8.46 ₁	P215-52	35	215	52	292	195	262	245.5	135	145	284	9	59
10.24 ₁	P260-92	51	260	92	335	235	305	286.5	153	169	-	11	66
12.40 ₂	P315-115	70	315	115	362	235	332	312.5	165	191	-	11	77

Rear mount chuck Front mount chuck

CHUCK PARAMETERS

		P135	P170	P215	P260	P315
Stroke per jaw	mm	3	4	4	5	5
Operating pressure min./max	bar	3.5/10	3.5/10	3.5/10	3.5/10	3.5/10
Piston area	cm ²	164	278	400	509	581
Gripping force at 6 bar	kn	26	47	70	83	91
Max. Speed at 6 bar	rpm	4500	4500	3600	3500	2500

Made By:

