

FLATBACK MOUNTING PLATES

These mounting plates are fully finished for the machine spindle, but have been left oversized where the hub mounts into the recess of the chuck. In order to achieve the best possible repeatability, a skim cut is recommended, thus the reason for leaving the hub oversized.

MOUNTING PLATES FOR 2, 3, 4, 6 JAW SELF CENTERING SCROLL CHUCKS

| SPINDLE NOSE | "A" DIA. | CHUCK DIAMETER | | | | | | | | |
|--------------|----------|----------------|--------|--------|--------|--------|--------|--------|--------|--------|
| | | 5" | 6" | 8" | 10" | 12" | 15" | 20" | 25" | 32" |
| D-3 | 2.130 | RD-205 | RD-203 | RD-220 | | | | | | |
| D-4 | 2.500 | RD-221 | RD-201 | RD-204 | RD-225 | | | | | |
| D-5 | 3.250 | | RD-202 | RD-208 | RD-210 | RD-213 | | | | |
| D-6 | 4.190 | | | RD-209 | RD-211 | RD-214 | RD-238 | | | |
| D-8 | 5.500 | | | | RD-212 | RD-215 | RD-267 | RD-242 | | |
| D-11 | 7.750 | | | | | RD-273 | RD-266 | RD-243 | | |
| D-15 | 11.250 | | | | | | | RD-244 | | |
| A2-3 | 2.130 | RA-205 | | | | | | | | |
| A2-4 | 2.500 | RA-221 | RA-201 | | | | | | | |
| A2-5 | 3.250 | | RA202 | RA-208 | RA-260 | | | | | |
| A2-6 | 4.190 | | | RA-209 | RA-261 | RA-262 | | | | |
| A2-8 | 5.500 | | | | | RA-263 | | RA242 | | |
| A2-11 | 7.750 | | | | | RA264 | RA-272 | RA-269 | RA-273 | RA-274 |
| A2-15 | 11.250 | | | | | | RA275 | RA-270 | RA-271 | |
| 1 1/2"-8 | 1.500 | | RT-950 | | | | | | | |
| 1 3/4"-8 | 1.750 | | RT-951 | | | | | | | |
| 2 1/4"-8 | 2.250 | | RT-955 | | | | | | | |
| 2 3/8"-6 | 2.375 | | RT-958 | | | | | | | |

Please note that these scroll chucks are rear mounting, in that the mounting bolts are in the rear of the chuck. Please ensure that there is enough clearance between the spindle and the sheet metal on American Standard type "A" machines to secure the chuck.

CAMLOCK - TYPE "D" FOR 4 JAW INDEPENDENT CHUCKS

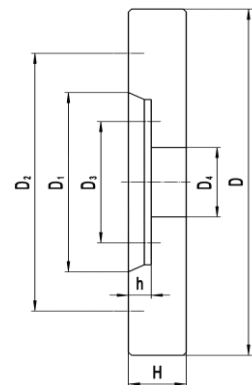
| SPINDLE NOSE | "A" DIA. | CHUCK DIAMETER | | | | | | | | |
|--------------|----------|----------------|--------|--------|--------|--------|--------|--------|--------|--------|
| | | 5" | 6" | 8" | 10" | 12" | 16" | 20" | 25" | 32" |
| D-3 | 2.130 | | SD-203 | SD-220 | | | | | | |
| D-4 | 2.500 | | SD-201 | SD-204 | | | | | | |
| D-5 | 3.250 | | SD-202 | SD-208 | SD-210 | SD-213 | | | | |
| D-6 | 4.190 | | | SD-209 | SD-211 | SD-214 | SD-238 | | | |
| D-8 | 5.500 | | | | SD-212 | SD-215 | SD-267 | SD-242 | | |
| D-11 | 7.750 | | | | | SD-273 | SD-266 | SD-243 | | |
| D-15 | 11.250 | | | | | | | SD-244 | | |
| A2-4 | 2.500 | | SA-201 | SA-204 | | | | | | |
| A2-5 | 3.250 | | SA-202 | SA-208 | SA-260 | | | | | |
| A2-6 | 4.190 | | | SA-209 | SA-261 | SA-214 | SA-238 | | | |
| A2-8 | 5.500 | | | | | SA-215 | SA-267 | SA-242 | | |
| A2-11 | 7.750 | | | | | SA-272 | SA-266 | SA-243 | SA-273 | SA-274 |
| A2-15 | 11.250 | | | | | | | SA-244 | SA-271 | SA-275 |

SEMI-FINISHED MOUNTING PLATES

These mounting plates are partially finished, and can be machined to fit any chuck. The spindle taper is finished and the mounting holes are spot drilled. The chuck side is blank.

SEMI FINISHED MOUNTING PLATES FOR TYPE "A" SPINDLES

| SPINDLE NOSE | Part Number | Dimensions | | | | | | | |
|--------------|-------------|------------|--------|-------|-------|-------|-------|--------|-------|
| | | D | D1 | D2 | D3 | D4 | H | h | h1 |
| 8"/A4 | SF-8A4 | 8.250 | 2.500 | 3.252 | -- | 1.000 | 1.500 | 0.512 | 0.394 |
| 8"/A5 | SF-8A5 | 8.250 | 3.2505 | 4.126 | 2.437 | 1.000 | 1.500 | 0.5625 | 0.472 |
| 8"/A6 | SF-8A6 | 8.250 | 4.1880 | 5.252 | 3.252 | 1.500 | 2.000 | 0.6250 | 0.512 |
| 10"/A5 | SF-10A5 | 10.000 | 3.2505 | 4.126 | 2.437 | 1.000 | 2.000 | 0.5630 | 0.472 |
| 10"/A6 | SF-10A6 | 10.000 | 4.188 | 5.252 | 3.252 | 1.500 | 2.000 | 0.6250 | 0.512 |
| 10"/A8 | SF-10A8 | 10.000 | 5.500 | 6.748 | 4.374 | 2.000 | 2.000 | 0.6875 | 0.551 |
| 12"/A6 | SF-12A6 | 12.795 | 4.188 | 5.252 | 3.252 | 1.500 | 2.000 | 0.6250 | 0.512 |
| 12"/A8 | SF-12A8 | 12.795 | 5.500 | 6.748 | 4.374 | 2.000 | 2.000 | 0.6375 | 0.551 |
| 12"/A11 | SF-12A11 | 12.795 | 7.751 | 9.252 | 6.500 | 3.000 | 2.000 | 0.7500 | 0.630 |
| 15"/A6 | SF-15A6 | 14.960 | 4.188 | 5.252 | 3.252 | 1.500 | 2.300 | 0.6250 | 0.512 |
| 15"/A8 | SF-15A8 | 14.960 | 5.500 | 6.748 | 4.374 | 2.000 | 2.300 | 0.6875 | 0.551 |
| 15"/A11 | SF-15A11 | 14.960 | 7.7507 | 9.252 | 6.500 | 3.000 | 2.300 | 0.7500 | 0.630 |



Fully finished mounting plates available by request. Please call with your specific application.