

# REPLACEMENT PARTS FOR 4-JAW CHUCKS

## INDEPENDENT CHUCKS

SIZE	MODEL	SOLID JAW REVERSIBLE	HARD TOP JAWS	SOFT TOP JAWS	MASTER JAWS	CHUCK BODY	OPERATING SCREW
3"	4034	403-5	N/A	N/A	N/A	403-8	406-2
4"	4044	404-5	N/A	N/A	N/A	404-8	404-2
5"	4054	405-5	N/A	N/A	N/A	405-8	405-2
6"	4064	406-5	406-7	406-0	406-6	406-8	406-2
8"	4084	408-5	408-7	408-0	408-6	408-8	408-2
10"	4104	410-5	410-7	410-0	410-6	410-8	410-2
12"	4124	412-5	412-7	412-0	412-6	412-8	412-2
16"	4164	416-5	416-7	416-0	416-6	416-8	416-2
20"	4204	420-5	420-7	420-0	420-6	420-8	420-2
25"	4254	425-5	425-7	425-0	425-6	425-8	425-2
32"	4324	432-5	N/A	N/A	N/A	432-8	432-2
40"	4404	440-5	N/A	N/A	N/A	440-8	440-2

## COMBINATION CHUCKS

SIZE	MODEL	SOLID JAW REVERSIBLE	CHUCK BODY	SCROLL & PINION	OPERATING SCREW
6"	F064	F06-5	F06-8	F06-1	F06-2
8"	F084	F08-5	F08-8	F08-1	F08-2
10"	F104	F10-5	F10-8	F10-1	F10-2
12"	F124	F12-5	F12-8	F12-1	F12-2

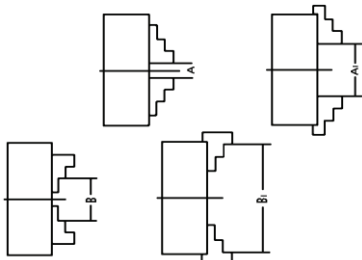
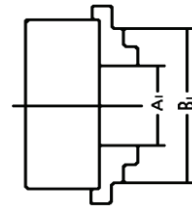
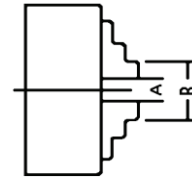
## SCROLL CHUCKS

SIZE	MODEL	SOLID JAW INTERNAL	SOLID JAW EXTERNAL	HARD TOP JAWS	MASTER JAWS	CHUCK BODY	SCROLL & PINION
5"	7054	705-5	705-9	705-7	705-6	705-8	705-1
6"	7064	706-5	706-9	706-7	706-6	706-8	706-1
8"	7084	708-5	708-9	708-7	708-6	708-8	708-1
10"	7104	710-5	710-9	710-7	710-6	710-8	710-1
12"	7124	712-5	712-9	712-7	712-6	712-8	712-1
15"	7154	715-5	715-9	715-7	715-6	715-8	715-1
20"	7204	720-5	720-9	720-7	720-6	720-8	720-1
25"	7254	725-5	724-9	724-7	724-6	725-8	725-1

# CLAMPING RANGES FOR 4-JAW CHUCKS

## INDEPENDENT CHUCKS

Size	Internal Clamping Range A - A1	External Clamping Range B-B1
3"	0.197~1.378	1.378~3.150
4"	0.236~1.772	1.575~3.937
5"	0.276~2.244	1.890~4.921
6"	0.315~3.150	1.969~6.300
8"	0.394~3.937	2.480~7.874
10"	0.590~5.118	3.150~9.843
12"	0.787~6.929	3.937~12.598
14"	0.787~8.110	3.937~13.780
16"	0.984~9.843	4.646~15.748
20"	1.378~11.811	4.921~19.685
25"	1.969~15.748	6.299~24.803
32"	2.756~21.260	7.874~31.496
40"	3.937~26.772	9.843~39.370



## COMBINATION CHUCKS

Size	Internal Clamping Range A - A1	External Clamping Range B-B1
6"	0.315~3.150	1.969~6.299
8"	0.394~3.937	2.480~7.874
10"	0.591~5.118	3.150~9.843
12"	0.784~6.693	3.937~12.795